

SimPal-TY130

WiFi Thermostat Socket

User Manual

Manual version 1.0

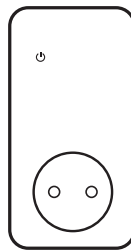


Download APP "Smart Life"

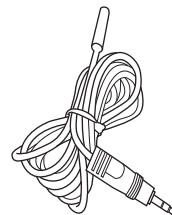
Available on Google Play Available on App Store



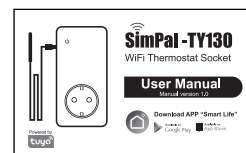
1.1 Package contents



WiFi Thermostat Socket (1 unit)

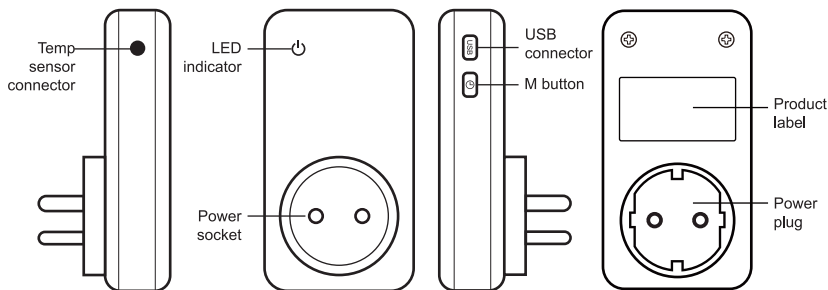


Temperature sensor (1 PC)



User manual (1 PC)

1.2 Socket instruction

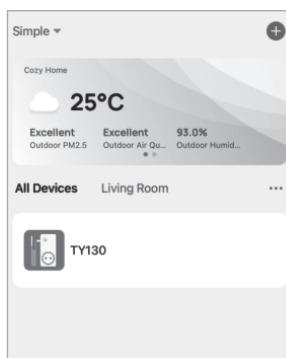
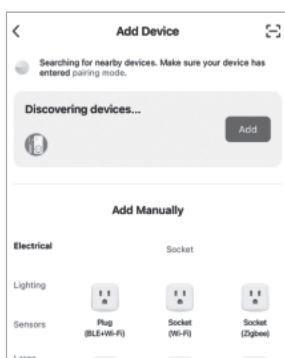


SimPal-TY130 Instruction

1.3 Light indicator

Color	Power Status	Action	Status
Blue	Power OFF	Constant light	Power OFF and work in standby mode
Red	Power ON	Constant light	Power ON and work in standby mode
Blue & RED		Flash fast	Waiting to set WiFi

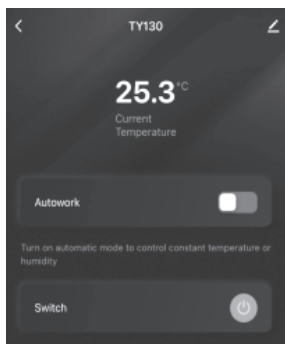
2.1 Install APP and add device



Download Tuya "Smart Life" APP and install on your Android or iOS smart phone. All operation and settings will be done on APP.

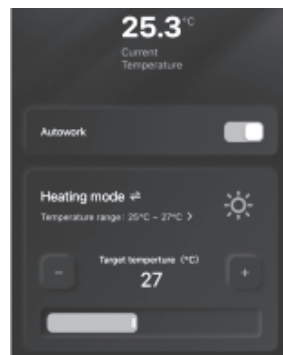
1. Plug the TY130 socket onto 110-230V AC power, the LED will flash slow, then its waiting to set WiFi. If the LED constant light, it means already set WiFi before. It needs to keep press M button for 10 seconds to reset. After reset, the LED will slowly flash.
2. Register the APP account and log in, after log in, click "+" icon to add device.
3. It will auto display "Discovering devices...", click "Add" button to add this device, select local WiFi SSID and input Password, then it can add device success.

2.2 Manual power on/off



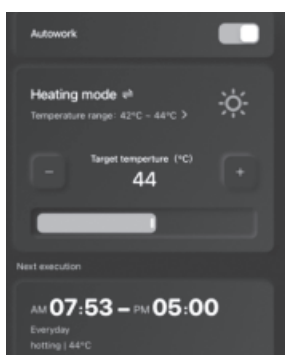
It will display current temperature on the device home page. Turn "Autowork" function off, then it can manual power on/off. When the power button in grey, it means power "OFF", click the power button, it will turn power on and display power icon in blue color.

2.3 Thermostat control



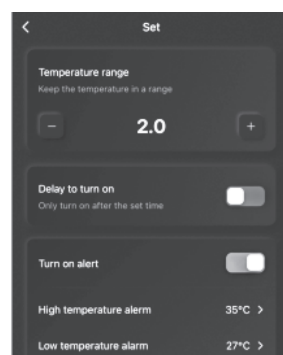
Turn the "Autowork" function ON, it will display thermostat control details. Select the "Heating" or "Cooling" mode, set the target temperature, then it will auto turn on/off according temperature value.

2.4 Timer control



It can set schedule to make device auto process thermostat control. Timer Control function only can set when "Autowork" function is turn on. Select the "🕒" icon to set timer control. It allow temporarily manual turn on/off power, but the timer control will process again when it reach next action time.

2.5 Temperature alert



Click the "🔊" button to set temperature alert. When temperature lower or higher the setting range, it will send message to alarm.

2.6 Check temperature record



Click "📊" icon to check temperature record. It can check day, week or month temperature record.

2.7 Reset factory settings

Reset factory settings will make the device removed from all registered APP account, need to set wifi and add device again on APP after reset. Keep press the M button for 10 seconds, device will reset factory settings.

3.0 Technical Specification

- Product size: 120*60*40 mm (No included plug)
- WiFi protocol: 802.11 b/g/n
- Power input: AC 110~250V
- Temperature sensor range: -20°C~105°C
- Indicator: Power output and wireless signal in Blue
- Max power loading: 16A or 3500W
- Standby power consumption: 25mA